

EyePrint Pro[®] over mini penetrating keratoplasty (PKP)

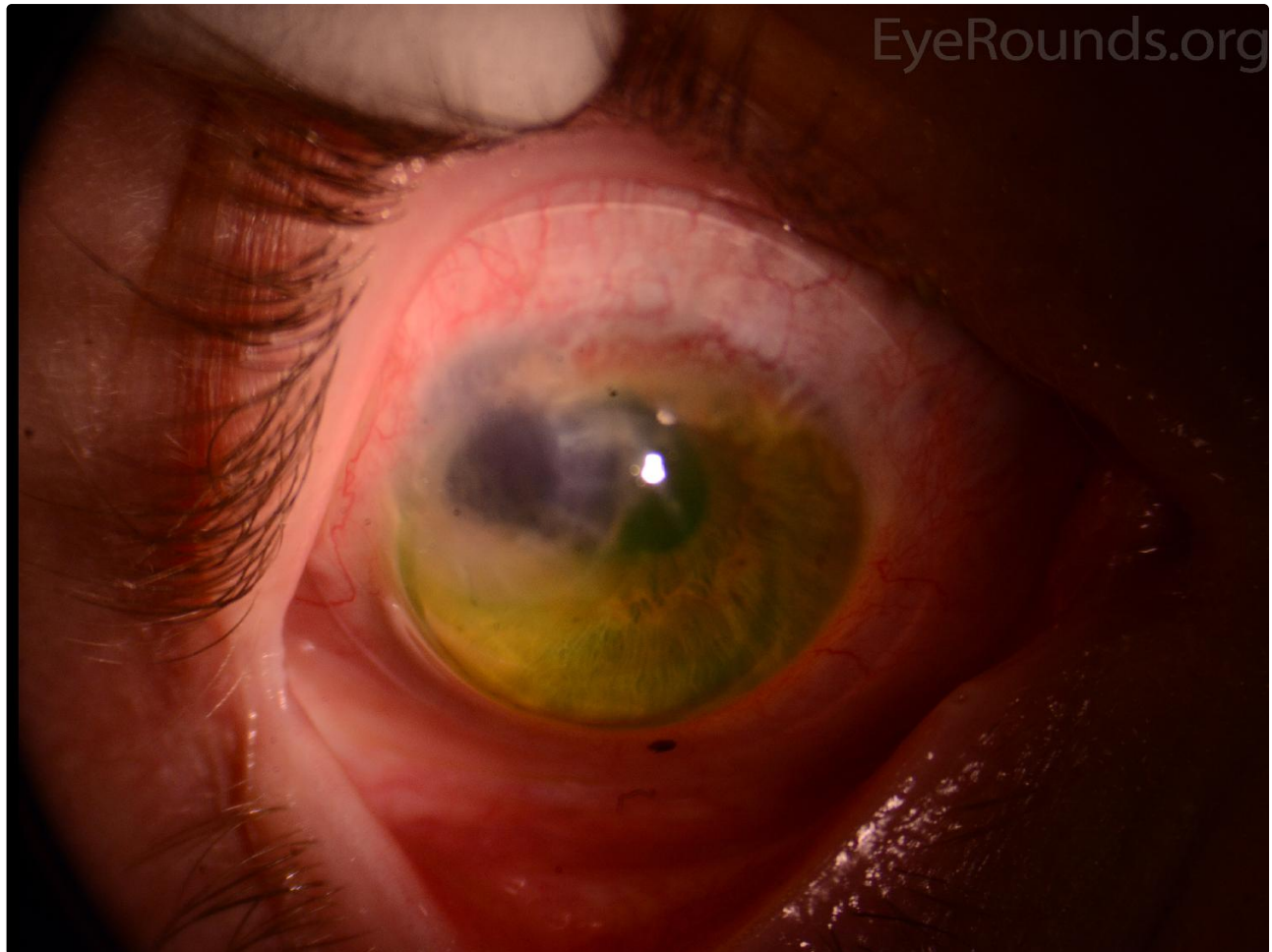
Category(ies): [Contact Lens](#)

Contributor: [Tressa Larson, OD, FAAO](#)

Photographer: [Tressa Larson, OD, FAAO](#)



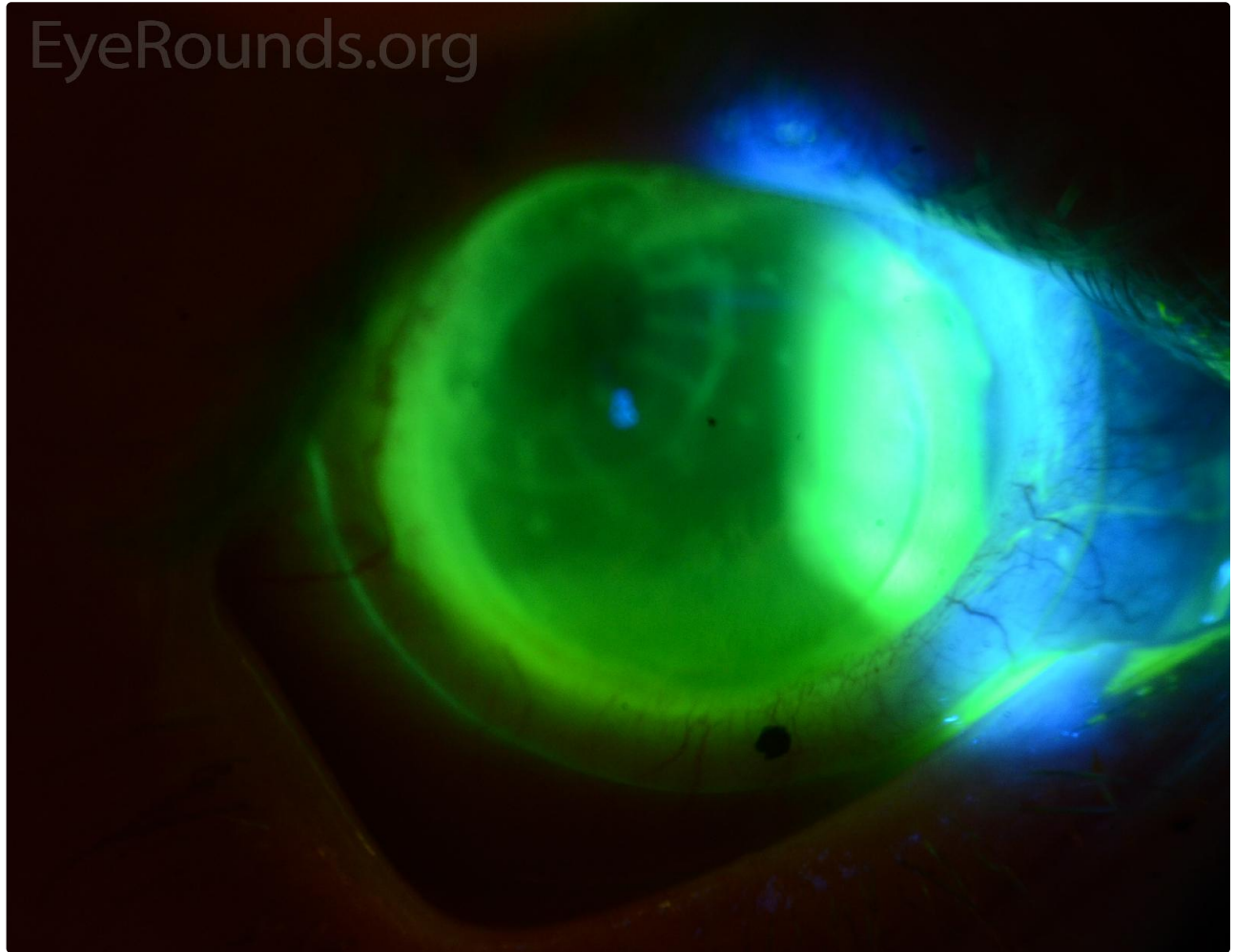
Scleral lenses are the gold-standard for the treatment of Terrien's Marginal Degeneration because they protect the delicate peripheral cornea from injury and also encourage vascularization of thinned areas of cornea which strengthens the area and also helps to prevent further injury. This patient had a globe rupture in the setting of Terrien's Marginal degeneration and underwent a tectonic mini-PKP. Once a globe has been ruptured such as this, scleral lenses are extremely difficult to fit as they are typically designed with either oblate or prolate corneas in mind. With EyePrint Pro[®], a mold of the eye is taken that is used to generate a 3-D computer model of the shape of the eye (centered on cornea, about 20 mm in diameter). To create a fully custom lens, the optics are overlaid and the desired corneal clearance is customized.



 Enlarge

 Download

EyeRounds.org



 Enlarge

 Download

Image Permissions:



Ophthalmic Atlas Images by EyeRounds.org, The University of Iowa are licensed under a [Creative Commons Attribution-NonCommercial-NoDerivs 3.0 Unported License](http://creativecommons.org/licenses/by-nc-nd/3.0/).

University of Iowa
Roy J. and Lucille A. Carver College
of Medicine
Department of Ophthalmology and
Visual Sciences
200 Hawkins Drive
Iowa City, IA 52242

[Support Us](#)

Copyright © 2019 The University of
Iowa. All Rights Reserved
[Report an issue with this page](#)
[Web Privacy Policy](#) |
[Nondiscrimination Statement](#)

[Cataract Surgery for Greenhorns](#)
[EyeTransillumination](#)
[Gonioscopy.org](#)
[Iowa Glaucoma Curriculum](#)
[Iowa Wet Lab](#)
[Patient Information](#)
[Stone Rounds](#)
[The Best Hits Bookshelf](#)

Media

Follow



Receive notification of new cases,
[sign up here](#)
[Contact Us](#)
[Submit a Suggestion](#)